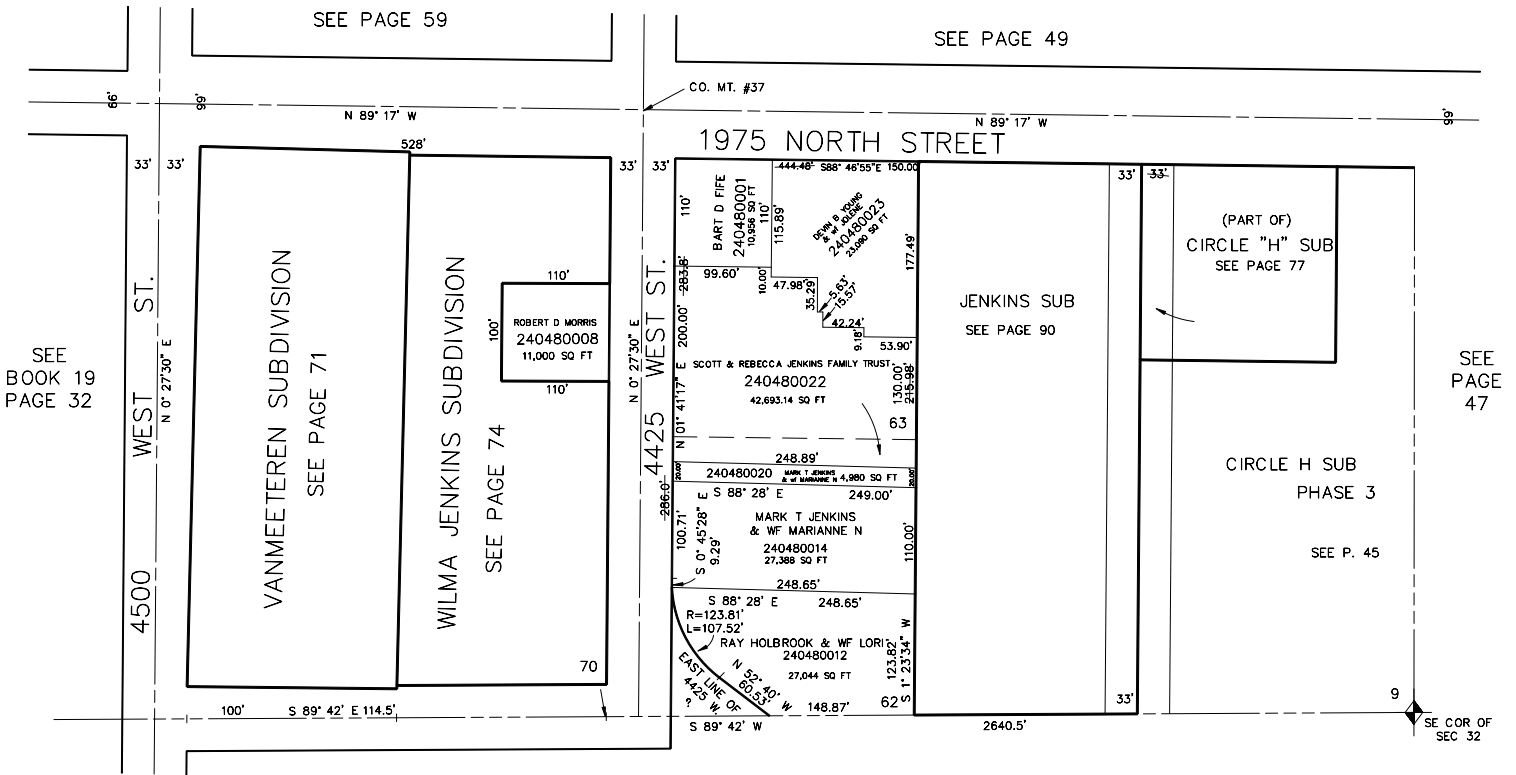


PART OF SE 1/4, SEC. 32, T.7N., R.2W., S.L.B. & M.  
**PLAIN CITY**  
 LOTS 9, 62, 63, 70, & 71, PLAT B  
 SCALE 1" = 100'

TAXING UNIT: 21



SEE  
 BOOK 19  
 PAGE 32

SEE  
 PAGE  
 47

SEE BOOK 15, PAGE 15